

WELCOME TO OUR PICTURESK PIECE OF PARADISE



WWW.ESKCARAVANPARK.COM.AU

A circular Aboriginal artwork in the top right corner, featuring a central figure with a red body and white limbs, surrounded by a yellow and orange border with white dots.

WUNYA!


**WELCOME TO THE ESK CARAVAN PARK
& BRISBANE VALLEY RAIL TRAIL MOTEL**

ACKNOWLEDGING COUNTRY

We acknowledge the traditional custodians of our local area; the Yuggera Nations to the South, the Jinibara Nations to the North and East, and the Dungibara Nations to the West.

We pay our respects to the Elders past, present and emerging - and to all Aboriginal and Torres Strait Islander First Nations peoples.

As you enjoy your stay on this beautiful land, we invite you to embrace and celebrate the rich history, cultural heritage and enduring legacy of our First Nations people and their continued connection to Country.

A larger Aboriginal artwork in the bottom right corner, featuring a central figure with a red body and white limbs, surrounded by a yellow and orange border with white dots, and a blue circular element at the bottom.



WELCOME TO THE ESK CARAVAN PARK

RECEPTION HOURS:

Monday - Friday: 9am to 6pm

Saturday: 9am to 5pm

Sunday: 9.30am - 4pm

CLOSED CHRISTMAS DAY

For **urgent** assistance outside of these hours, please
call the emergency after-hours caretaker on
0439 426 206

EMERGENCY CONTACT DETAILS

POLICE, FIRE, AMBULANCE: 000

ESK HOSPITAL / 24 HOUR EMERGENCY: (07) 5424 4600

WWW.ESKCARAVANPARK.COM.AU

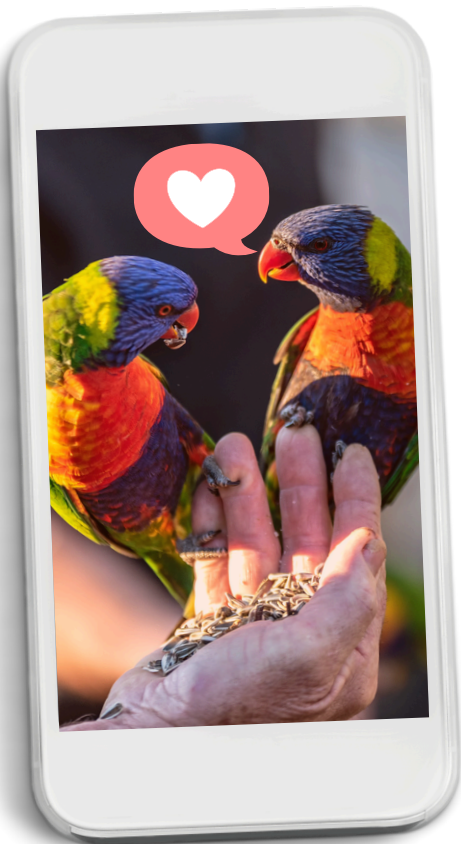


WELCOME TO THE ESK CARAVAN PARK

WE HOPE YOU ENJOY YOUR STAY

If there is anything our team can do to make you more comfortable during your visit, please let us know.

CONNECT WITH US ON SOCIAL MEDIA & STAY UP TO DATE WITH UPCOMING EVENTS AND SPECIAL DEALS



LIKE AND CHECK-IN
WITH US ON FACEBOOK
'ESK CARAVAN PARK'

SCAN
ME 



FOLLOW & TAG US
ON INSTAGRAM
@Esk_CaravanPark
#EskCaravanPark

SCAN
ME 



SHARE & REVIEW YOUR
EXPERIENCE IN
PICTURESK



EVENTS & ENTERTAINMENT

FREE LIVE ENTERTAINMENT EVERY SATURDAY

Bring some refreshments and nibbles and join us for live entertainment in the Camp Kitchen every Saturday.

While pets are not permitted inside the camp kitchen or the undercover entertainment area, you can kick back and relax in one of our pet-friendly alfresco areas - complete with picnic tables, umbrellas and hitching posts - and enjoy a relaxing afternoon or evening of pet-friendly socialising and entertainment.

We'll even have our amazing stone fireplace crackling away to keep you toasty during the cooler months.



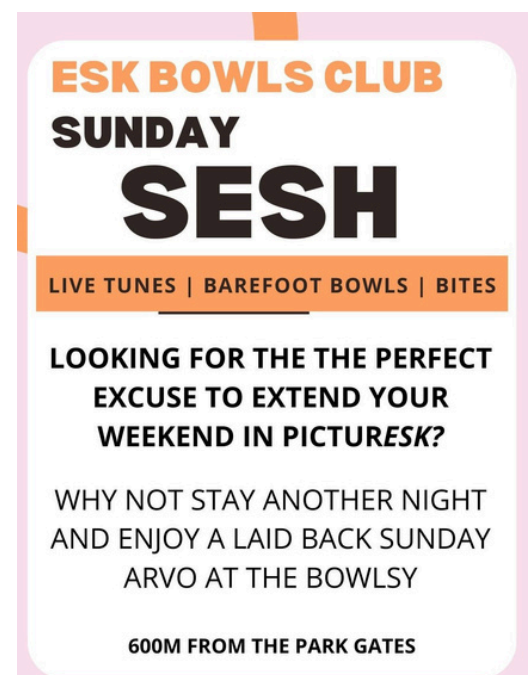
WHAT'S ON IN ESK?

Elevate your Thursdays to new heights with a PARMI-licious extravaganza at the [Esk Grand Hotel](#)

Experience the heartbeat of Esk at our local Markets. Discover the magic of our gorgeous town as you stroll through our vibrant Saturday markets, located a leisurely 400m stroll from our park entry.

If staying with us on a Sunday, head over and join the awesome team at the [Esk Bowls and Community Club](#) for a laid-back Sunday Sesh filled with good vibes, live music, barefoot bowls and country cooking.

Check out our website or follow us on Facebook for updates on upcoming events, including Race Meets at the Jockey Club and Civic Centre performances.





PARK FACILITIES

HEATED SWIMMING POOLS OPEN 9AM TIL DUSK

We offer our guests 2 heated pools equipped with sun lounges, umbrellas and pool noodles for your year round enjoyment.

Choose from our family pool or escape the calls of 'Marco Polo' in our tropical, resort-inspired adults only 'Sanctuary' where you can soak in the stunning scenery of Mount Glen Rock and surrounds in peace.

Please ensure that you read and understand the 'pool rules' located on the pool gates prior to entering each area. No glass is permitted in either of the pool areas.

A designated 'Pet Parking' area is located next to the Family Pool, where your four-legged pals can lounge in comfort on plush astroturf, complete with water bowls and collar tethers, while you relax and enjoy a refreshing dip in our heated pools.

A small amenities block is located adjacent to the swimming pool complex and offers unisex shower and toilet facilities.

Pool towels can be hired from reception for \$3.50

PET PARKING AT THE POOLS

A designated 'Pet Parking' area is located next to the Family Pool.

Your four-legged pals can lounge in comfort on plush astroturf, complete with water bowls and collar tethers, while you relax and enjoy a refreshing dip in our heated family or adults-only pools.

Your fur-babies will love watching you splash around while they chill out in style.

For the consideration of other pool-users, please ensure your pets do not cause a nuisance while in the pet parking area.



PARK FACILITIES

CAMP KITCHENS OPEN 7AM TIL 10PM

Our large communal Camp Kitchen is the social heart of the park where guests can cook up a storm with our BBQs, Pizza Ovens and gas cooking facilities.

Featuring live entertainment every Saturday and an impressive stone fireplace that is set of an afternoon during the cooler months.

Additional firewood is also provided and guests are welcome to light the fire and use the provided wood to keep toasty throughout the winter evenings.

For our pet-loving pals, we've created pet-friendly alfresco areas with picnic tables and umbrellas. Due to health regulations, furry friends are not permitted within the camp kitchen or undercover areas.

While we love a good theme, reserving tables in the main Camp Kitchen with tablecloths and decorations is a no-go to ensure all of our guests feel included.

Our awesome 'Chill n Grill' camp kitchen (seats around 25) is located next to the Family Pool and comes complete with a BBQ and Pizza Oven, microwave, fridge and sink.

The Chill n Grill can be privately reserved, so please give us a call well ahead of your arrival to secure your complimentary facility booking, subject to availability.

Your four-legged pals can join you at the Chill n Grill in our designated pooch parking area, complete with plush astroturf, water bowls and collar tethers.

For the consideration of guests and staff, we kindly ask that you clean utensils and pizza trays immediately after use and leave the Camp Kitchen as you found it.

The Camp Kitchens are to be vacated at 10pm when the lights are automatically switched off and our team conduct their nightly shut down.

BOOK EXCHANGE & GAMES

We provide a bookcase full of weird and wonderful reads in our main Camp Kitchen, so please feel free to swap your finished books for a new one during your stay.

A selection of board games are also available for use on the book shelf, or why not try your hand at some Bocce on the lawn?



PARK FACILITIES

FREE UNLIMITED WIFI

Complimentary WIFI is available throughout the Park and the strongest connection will be found at our free WIFI hub in the main Camp Kitchen.

WIFI codes are provided on your park map upon check in and additional vouchers can be obtained from reception during business hours.

Several local cafes also provide free WIFI whilst enjoying a meal or drink.

PIZZA OVENS & BBQ'S

We offer guests the use of our BBQ's and gas-fired pizza ovens, pizza trays, and cutters which are located in both our main Camp Kitchen and the 'Chill n Grill'.

For the consideration of other guests, we ask that BBQ's, pizza trays and utensils are cleaned immediately after use.

Fresh pizzas and/or ingredients can be purchased from the Esk Fruit Shop and Deli located on the main street, or the IGA Supermarket on Hassall Street

FIRES & BRAZIERS

We offer a limited number of powered and unpowered sites which can accommodate approved braziers and small fire pits with the use of a drop tray and fire blanket, subject to local or park implemented fire restrictions.

Fire blankets (\$10) and 20kg bags of firewood (\$15) can be purchased from reception - our team can even deliver fire wood to your site.

If not staying on a fire-approved site, we supply wood for the gorgeous stone fireplace in the main camp kitchen and usually have this set by 4.30pm each day during the cooler months of the year for all guests to sit around and enjoy.

Firewood for the pot-belly in the 'Chill n Grill' camp kitchen is available on request.



PARK FACILITIES

ACCESSIBLE AMENITIES

We are dedicated to creating an inviting environment where guests of all abilities can partake in the full spectrum of experiences our park offers.

The addition of our new accessible bathroom has been designed to ensure that guests of all abilities can enjoy a comfortable and convenient stay with us.

Located at the rear of the main amenities block and accessed via the laundry, the accessible amenities are reserved for guests experiencing accessibility challenges or mobility limitations.

Your consideration ensures the safety of comfort of your fellow guests who rely on these facilities being readily accessible and we kindly ask that you use the main amenities with kindness and inclusivity in mind.

AMENITIES

Our main amenities block offers boasts underfloor heating in the showers and are cleaned daily between 10am - 12pm.

Guests are welcome to use our small unisex amenities block (next to the family pool) which is equipped with showers and toilets during these hours.

LAUNDRY FACILITIES

The guest laundry is located at the rear of the main amenities block and features 2 washing machines, 2 dryers, laundry tub, washing basket, an iron and ironing board.

Washing machines are \$5 per load and dryers are \$4 per load.
Coins available from reception during business hours.

Laundry powder can be purchased from reception or from the IGA Supermarket.

DUMP POINT

Our complimentary dump point is located on the northern side of the main amenities block.



PARK FACILITIES

PET-FRIENDLY FACILITIES

We welcome well-behaved fur friends who remain on their lead at all times while in the park grounds and at your sites or pet-friendly cabins.

Pets are welcome to stay with you for free on our powered and unpowered sites.

Pet-friendly cabins and disability assist motels rooms can be booked by pre-arrangement and will incur a modest pet-cleaning fee.

For the consideration of other guests, we kindly ask that your pet is picked up after, does not cause a nuisance and is not left unattended at your accommodation.

Due to health regulations, pets are unfortunately not permitted in our common areas such as pools or the camp kitchen & entertainment spaces.

We've created pet-friendly alfresco areas around the camp kitchen, complete with picnic tables, umbrellas and hitching posts so you can enjoy socialising and entertainment with your furry friends.

A designated 'Pet Parking' area is located next to the Family Pool, complete with plush astroturf, water bowls and collar tethers, so they can relax while you enjoy a refreshing dip in our heated pools.

DOG WASH

Located at the end of our amenities block, our coin operated dog wash is available for all guests and their pooches to use during their stay.

The cost is \$8 for 8 minutes with additional time at the cost of \$1 per minute. Please put extra coins in before the 8 minutes lapse to ensure continuous use.

LORIKEET FEEDING - DAILY AT 4PM

Our resident lorikeets come in for their 4pm feed each day near 'The Sanctuary'.

If you're a nature-lover, this is a fantastic opportunity to get up close and personal with our gorgeous - and very cheeky - feathered friends.

We provide the sunflower seeds, just be sure to bring your camera!



PARK FACILITIES

GENERAL WASTE

Our team take immense pride in ensuring the grounds are beautifully presented and greatly appreciate the Park being respected by our guests.

Red general waste bins are strategically placed throughout the Park for your convenience.

RECYCLING & SUSTAINABILITY

Our entire team deeply values the importance of harmonising with and supporting the ecosystem and community that embraces us. We are honoured to be recognised as a Quality Tourism Accredited Business for Sustainable Tourism by the QLD Tourism Industry Council.

We hold a deep belief that social responsibility is an extraordinary opportunity to give back to our wonderful little community and through the Containers for Change recycling program, we are able to provide invaluable support to numerous local causes, community groups, and events through sponsorship, which last year totalled \$5,000

While you're here immersed in the beauty of our PicturEsk piece of Paradise, your commitment to recycling your cans and bottles not only nurtures the environment, but also enriches the lives of the diverse community groups in Esk.

We thank you for being an integral part of this positive impact.





ACTIVITIES & ADVENTURE

EXPERIENCE SOMERSET

Take your holiday to the next level and experience the Somerset Region's extensive range of outdoor activities.

From riding the Brisbane Valley Rail Trail to Llama walking; skydiving to hot air ballooning; canoeing to four-wheel driving or horseriding...

...Whether you seek your thrills on land or in the sky, there's an abundance of adventure awaiting visitors of all ages in Somerset...

A comprehensive range of brochures highlighting popular tourist attractions and activities in the Somerset Region can be found at reception, or by visiting the Esk Visitor Centre.

You may also scan the QR code below for further information on recreational trails & maps, outdoor adventure, water activities at our neighbouring Dams, nature & wildlife, local art, heritage & culture, plus local events and markets.



**EXPERIENCE
SOMERSET**



**UPCOMING
EVENTS**



ACTIVITIES & ADVENTURE

BRISBANE VALLEY RAIL TRAIL

Our 'PicturEsk piece of Paradise' backs directly onto the Brisbane Valley Rail Trail which makes us a fantastic base for exploring the trail by bike, on foot or horseback.

People of all ages and fitness levels can explore the BVRT with sections ranging from 7 to 24 kilometres.

Set your own pace and create your own adventure along the way.

The trail follows the old Brisbane Valley railway line for an incredible 161km from Wulkuraka to Yarraman and is a mecca for mountain bikers, horse riders and hikers who enjoy the excitement of experiencing a range of environments.

Along the journey, rail trailers experience a range of rural landscapes, creek crossings and historic landmarks.

As the Brisbane Valley Rail Trail takes in many of Somerset's towns, visitors can choose how much or how little of the rail trail they would like to experience.

Looking for something a little different?

The Brisbane Valley Rail Trail offers several unique experiences to visitors including walking a llama along the trail with Ottaba Llamas or horse riding tours with Nash Horse Trekking.

Ottaba Llamas often run guided walks of Sandy Creek on a Saturday morning from the Esk Lions Park, located opposite the Esk Visitor Centre.

A comprehensive range of brochures and guides highlighting the various stages of the BVRT can be found at reception, or by visiting the Esk Information Centre.



LOCAL SPECIALTY SHOPS & SERVICES

Whether you're looking for unique gift ideas; a relaxing pampering session;
a day exploring the Brisbane Valley Rail Trail or teeing off...

Esk has got you covered!

Please scan the QR codes below to view trading hours,
locations and more details on services offered



**BRISBANE
VALLEY HIRE
SALES &
HARDWARE**



**OUT THERE
CYCLING & TOURS**



**ESK GOLF
CLUB**



**EVERY SEASON
HAIR & BEAUTY**



**NEWSAGENCY
& GIFTWARE**



**LITTLE COUNTRY
LANE HOMEWARES
& GIFTS**



**TRADING POST
& ELEGANT JUNK**



**HOUSE OF KALU BABU
UNIQUE GIFTS**



LOCAL EATERIES, CAFES AND HOTELS WITHIN A 500M WALK

Tempt your tastebuds with a delicious meal prepared with farm-fresh produce; kick back and enjoy a beer and friendly atmosphere at one of our many country pubs; or curate your own gourmet hamper and choose your own adventure...



**ESK FRUIT SHOP
& GOURMET DELI**



**ENIGMAS CAFÉ
& TAKEAWAY**



**ESK THAI
TAKEAWAY**

PET-FRIENDLY DINING OPTIONS:



**GRAND HOTEL
BAR & BISTRO**



**NASH
GALLERY
& CAFÉ**



**BRISBANE
VALLEY
COFFEE
ROASTERS**



SERVICES IN THE TOWN OF ESK

The town of Esk offers a number of services within a short walk of the Park.

Please scan the QR codes below to view trading hours,
locations and more details on services offered



**DISCOUNT
CHEMIST**



**ESK MEDICAL
CENTRE**



**ESK DENTAL
CLINIC**



**ESK CAR CARE
& MECHANICAL**



**VETERINARY
SURGERY**



**ESK
POST OFFICE**



**CYKAT IT &
COMPUTERS**



**MOBIL
SERVICE STATION**



SERVICES IN THE TOWN OF ESK

TOURIST INFORMATION / ESK VISITOR CENTRE

82 Ipswich Street (Brisbane Valley Highway) Esk.

PH: 07 5424 2923

ATM

The nearest ATM is located in the IGA Supermarket on Hassall St.

Alternatively, during week days, you may visit the Post Office located on the corner of Hassall Street.

BUS SERVICE

A daily bus service to Ipswich departs from outside the Anglican Church.

Please visit the Esk Visitor Centre for more details.

CHURCHES

There are numerous churches of all denominations in and around Esk and Toogoolawah. Please visit the Esk Visitor Centre for more details.

DOCTOR / MEDICAL CENTRE

Esk Medical Centre, 21 Hassall Street, Esk PH: 07 5317 6010

HOSPITAL

Esk Hospital - 24 Hour Emergency

Highland St, Esk

PH: 07 5424 4600

JUSTICE OF THE PEACE

Details are available online for the several JP's in the local area, including those working at the Somerset Regional Council office on Redbank St.



PARK POLICIES

CHECK IN & CHECK OUT

Ensuite, Powered and Unpowered sites are welcome to arrive from 11am.

Cabin, Motel, Vintage Van and Glamper guests may arrive from 2pm.

Departure is 10am. A late check-out to 3pm can be arranged, subject to availability.

If staying on a site, you may arrange a late check out to 3pm,
charged at half of the nightly rate.

If staying in a Cabin, Motel or Glamper and departing on a Sunday,
you may arrange a late check out to 3pm, charged at \$40.

Please enquire with reception to confirm late check out availability for your stay.

VISITORS

We are very passionate about ensuring that our guests have exclusive use of the Park facilities, particularly over fully-booked weekends and holiday periods.

With this in mind - and subject to availability - visiting family and friends may use the park pools and camp kitchens with the purchase of a day pass, priced at \$10 per adult and \$5 per child.

Visitors can arrange their passes upon signing into our front office on their arrival.

LOST PROPERTY

Lost property will be retained for one month after which time anything saleable is donated to the local community-run Op Shops.

If items are handed in to the office after a guest's departure, the guest will be contacted (where possible) to check if they are able to return to collect their property.

Should you be unable to return we request that you send a pre-paid, self-addressed envelope or satchel for us to return your property.



PARK POLICIES

SUPERVISION OF CHILDREN

The supervision of children is vital for their safety and the enjoyment of all guests.

Please ensure children are accompanied by an adult when visiting the pool, amenities and while using the park facilities.

BIKES | RIDE-ON EQUIPMENT

Bikes and scooters may be ridden in the Park during daylight hours with the use of a safety helmet and adherence to the park speed limit.

Please ensure bikes and scooters are not ridden in the camp kitchens & do not block entry points to park facilities, or create tripping hazards. Dedicated bike parking stations are provided outside of the family and adults-only pools and on the Southern entry point of the main Camp Kitchen.

BALL GAMES

Due to confined spaces and risk of damage to residential homes, vehicles and vans, ball games are unfortunately not permitted in the Park.

There is a lovely grassed area 100m from the park entry towards Sandy Creek, and a fully-equipped playground at Pipeliner Park which provides the perfect space for children to play. Please visit reception for directions.

SPEED LIMIT | PARKING | VEHICLES

As all roads within the Park are shared with pedestrians and children riding bikes, we have a 5kph Speed Limit to ensure everyone's safety.

One vehicle is permitted per booking/site/cabin/motel room.

Additional vehicles must be parked in our designated visitor parking bays which are located in front of the Family Pool, or on Hassall Street.

Please contact reception if you wish to wash or repair you vehicle onsite.



PARK POLICIES

10PM QUIET TIME

We're all about crafting an environment where good times meet tranquility and take pride in providing a peaceful and enjoyable space for our guests and park residents.

Please be considerate of your neighbours by restricting noise from speakers, TV and social gatherings, particularly between 10pm and 8am.

Park Management conduct a security walk of an evening and have a 'zero tolerance' policy for noise complaints received after 10pm.

Your understanding and cooperation contribute to the positive experience of both our guests and our team. We appreciate you helping us to create a pleasant and comfortable environment for all.

GUEST BEHAVIOUR

Our Park team will not accept anti-social or unruly behaviour. Repeated failure to comply with our park policies - and any illegal activities - will not be tolerated.

Management reserves the right to immediately terminate the occupancy of the offending party/s without explanation and no refunds will be given.

SMOKING

Queensland's Tobacco Laws state that smoking is banned within 10 metres of public facilities, such as our reception area, camp kitchens and pool areas.

Please also be considerate of guests staying in neighbouring Cabins and Camp Sites.

Smoking of tobacco products and e-cigarettes is not permitted in our Cabins or Motel rooms and will result in a cleaning fee being charged to the credit card on your booking.

If smoking within in the park grounds, please do the right thing and 'bin your butt'.

Cigarette disposal points are located near the Camp Kitchen, the entry of the main amenities block and opposite the BVRT Motel.



TRAVELLER ACCOMMODATION PROVIDERS (LIABILITY) ACT

NOTICE ABOUT LOSS OF GUESTS' PROPERTY

The Traveller Accommodation Providers (Liability) Act 2001 changes the common law about **innkeeper's liability**

Under the Act, an **accommodation provider** may be liable to make good any "loss" of a **guest's property** in certain circumstances even though the loss is not caused by the "fault" of the accommodation provider, or the provider's **agent**

The strict liability of the accommodation provider under the Act –

- applies only to a guest of the accommodation provider on a day when an **accommodation unit is provided** for the use of the guest
- is limited to \$250 for each accommodation unit provided for the use of the guest on the day, unless the guest's property was placed in **safe custody facilities**
- does not cover **motor vehicles** and things owned by the guest left in or on motor vehicles.

Note: Words appearing in italics and bold have a special meaning under the Traveller Accommodation Providers (Liability) Act 2001



EMERGENCY PROCEDURES

**IN THE EVENT OF AN EMERGENCY,
PLEASE DIAL: 000**

FIRE & FLOOD EVACUATION PROCEDURE

STAY CALM

ASSEMBLE ALL MEMBERS FROM YOUR ACCOMMODATION

**GO TO THE NEAREST EMERGENCY ASSEMBLY POINT,
EITHER AT THE CAMP KITCHEN OR OUTSIDE THE FRONT OFFICE**

**(SEE EVACUATION MAP LOCATED IN
YOUR CABIN OR MOTEL ROOM)**

MEDICAL OR POLICE EMERGENCY: DIAL 000

For all non-emergencies, please contact reception for assistance.

